

7. 添付書類

(1) 施行地区の位置図

(2) 施行地区の区域図

施行地区区域図

施行地区区域図（公図写）

(3) 設計図

施設建築物の設計図

配置図

地下1階 平面図

1階 平面図

2階 平面図

3階 平面図

4～6階 平面図

7～10階 平面図

11～12階 平面図

13～15階 平面図

PH階・PHR 平面図

断面図1

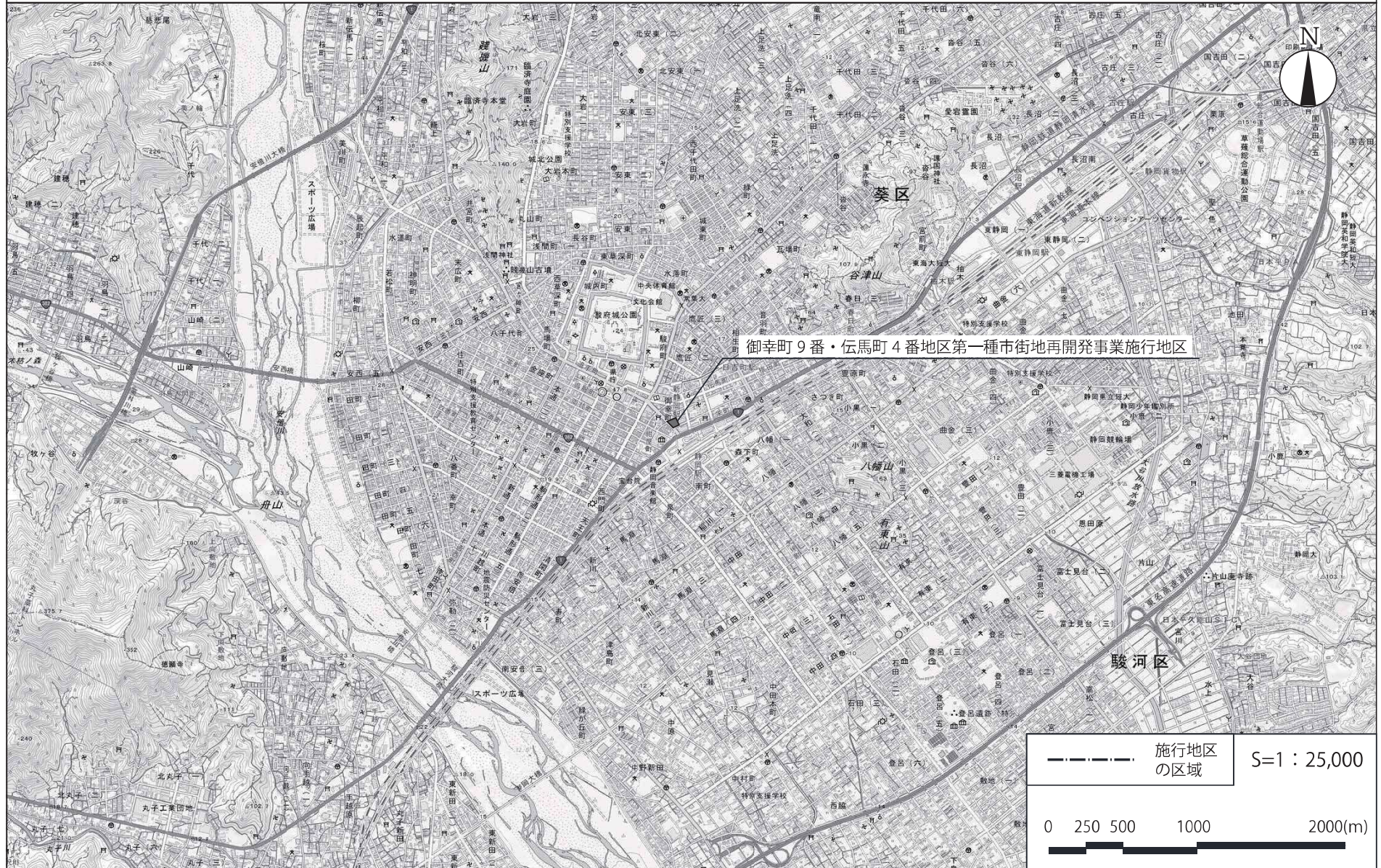
断面図2

施設建築敷地の設計図

公共施設の設計図 断面図

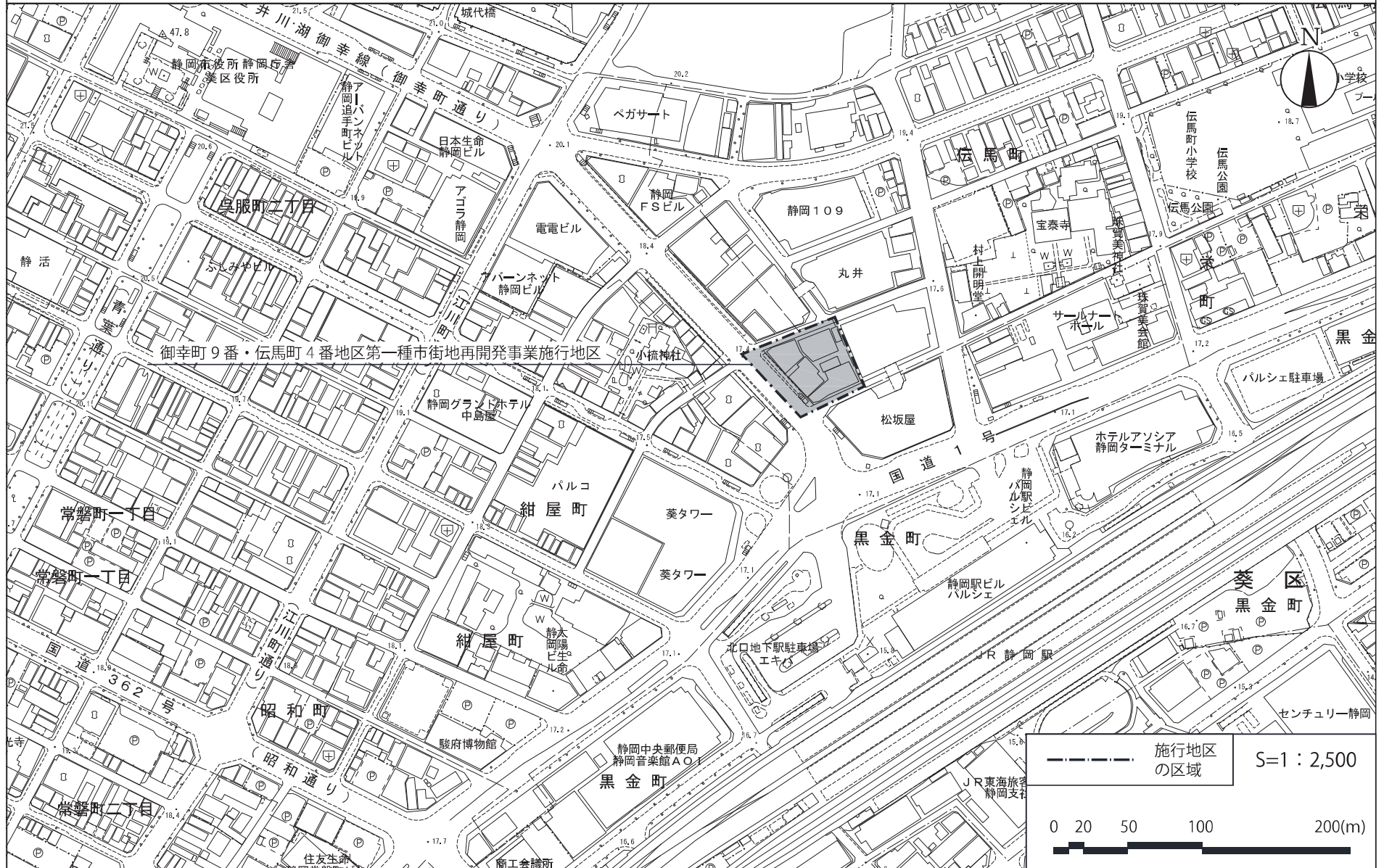
(1) 施行地区の位置図

施行地区位置図

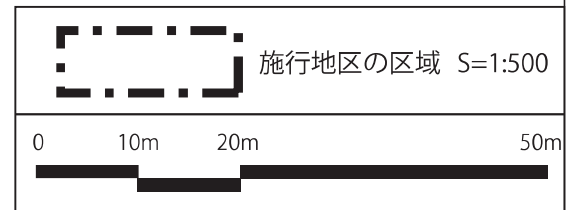
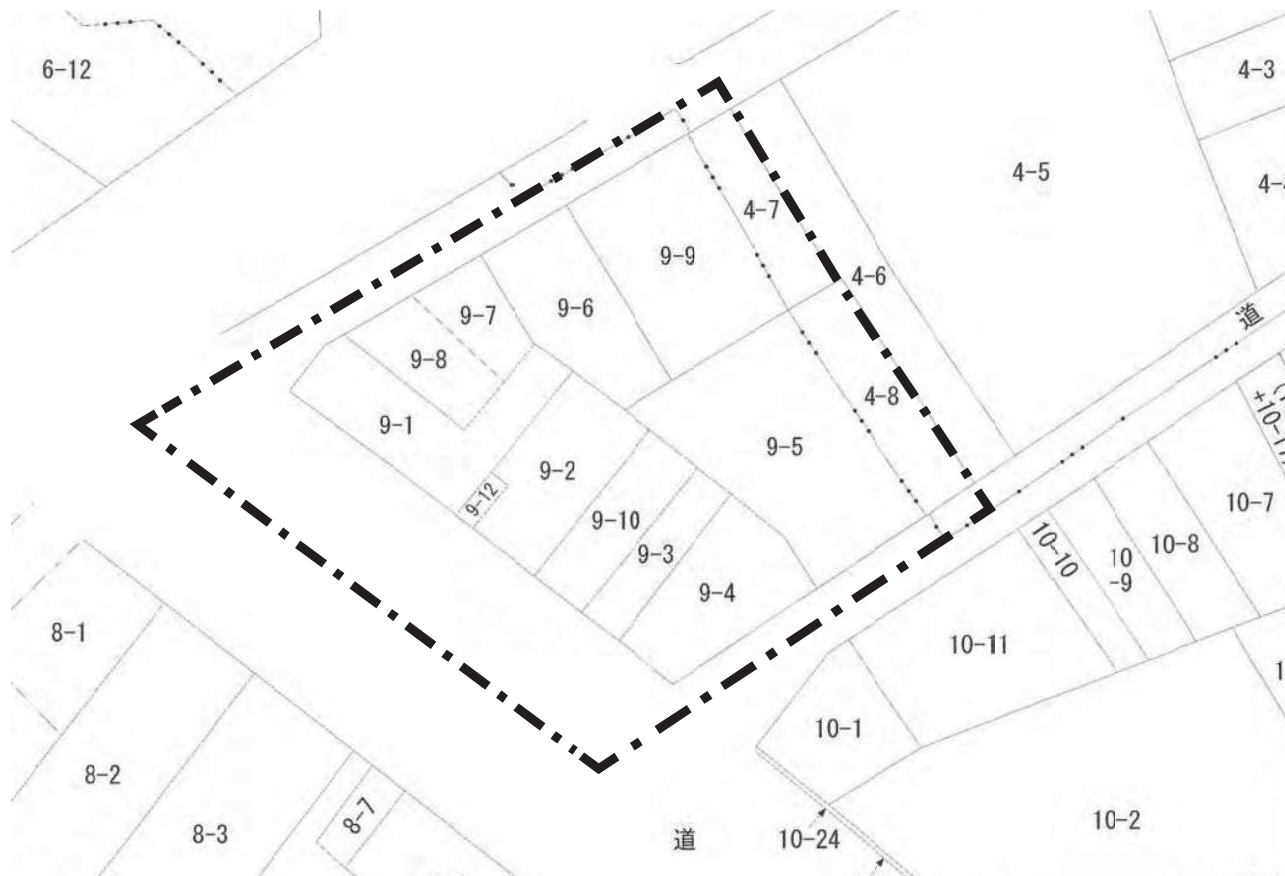


(2) 施行地区の区域図

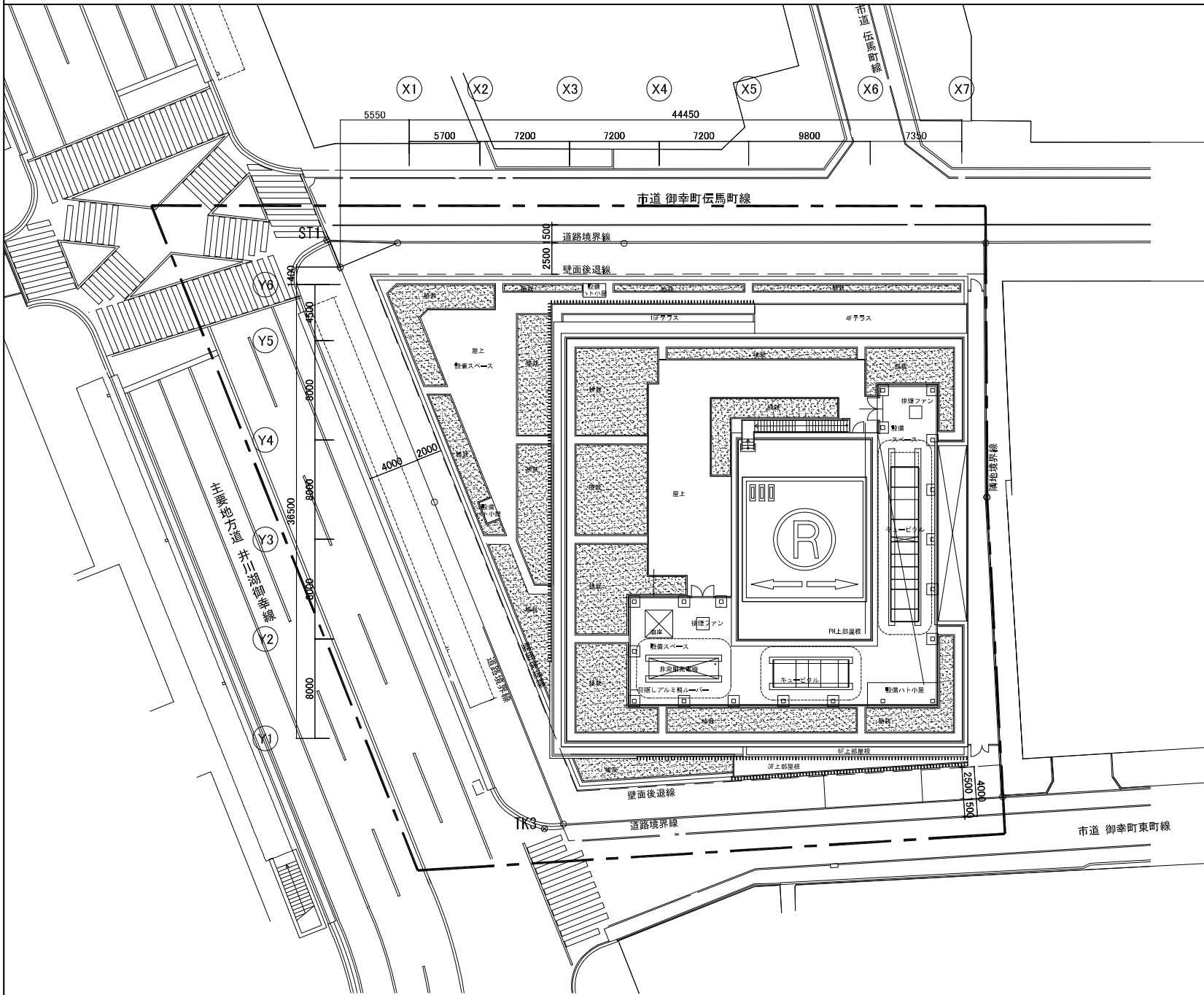
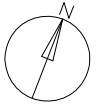
施行地区区域図

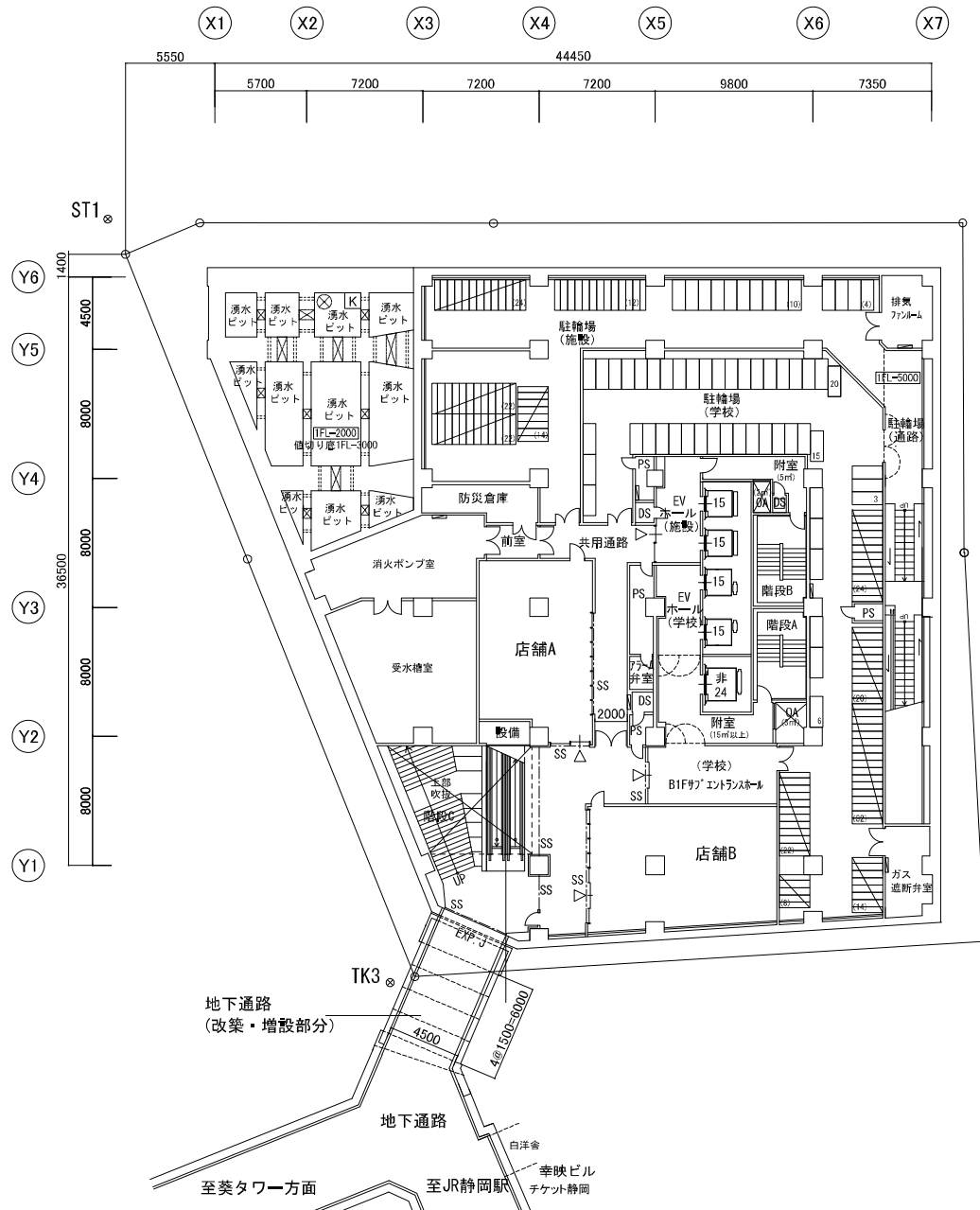


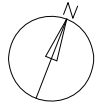
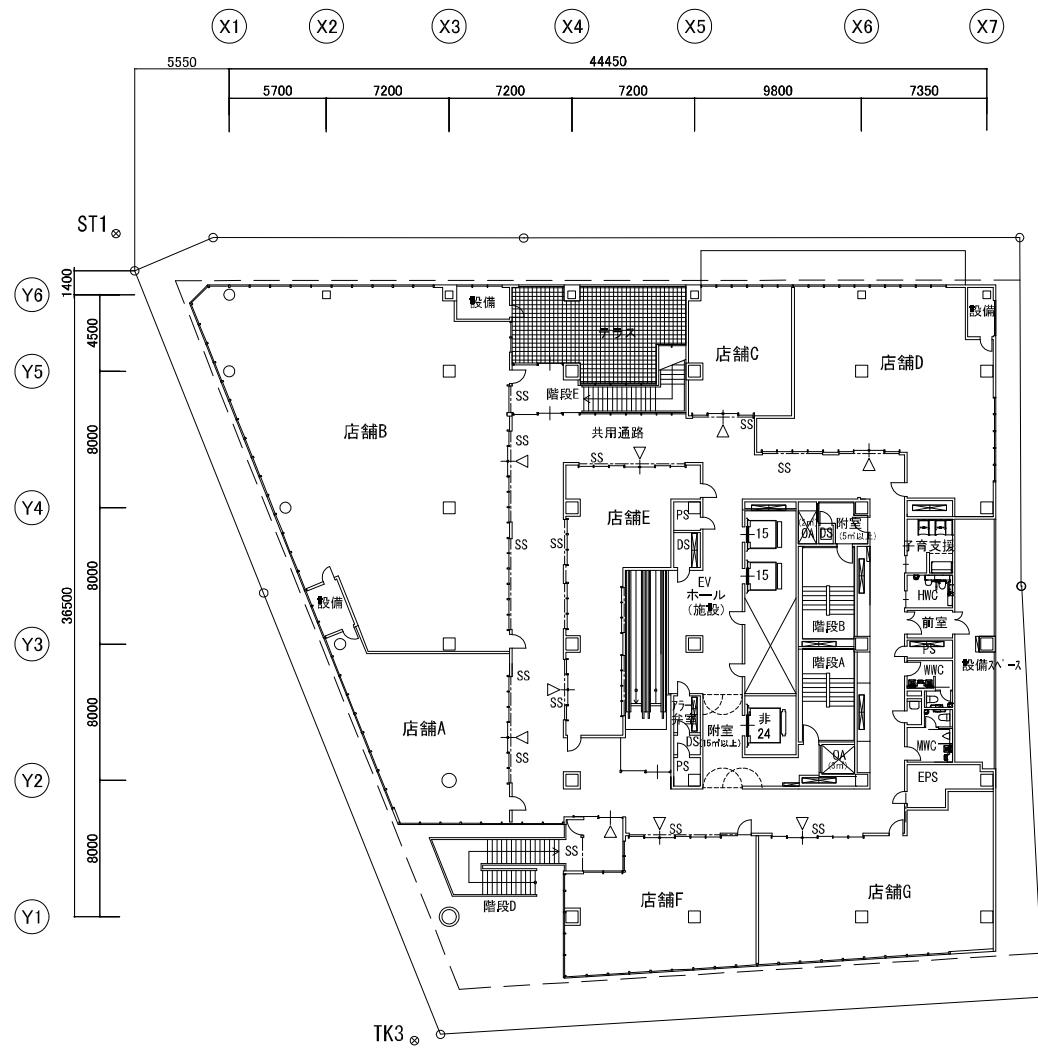
御幸町9番・伝馬町4番地区第一種市街地再開発事業 施行地区区域図(公図写)

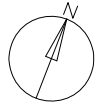
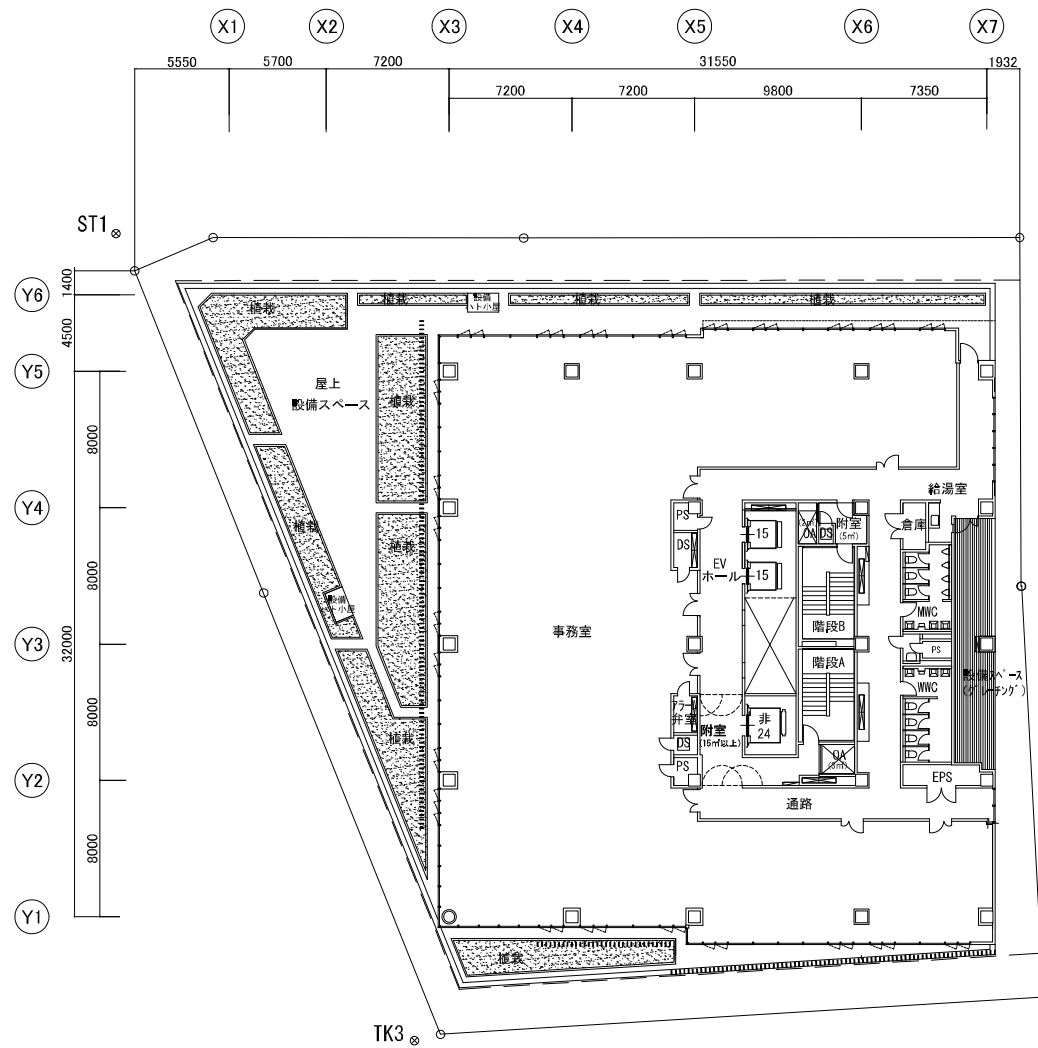


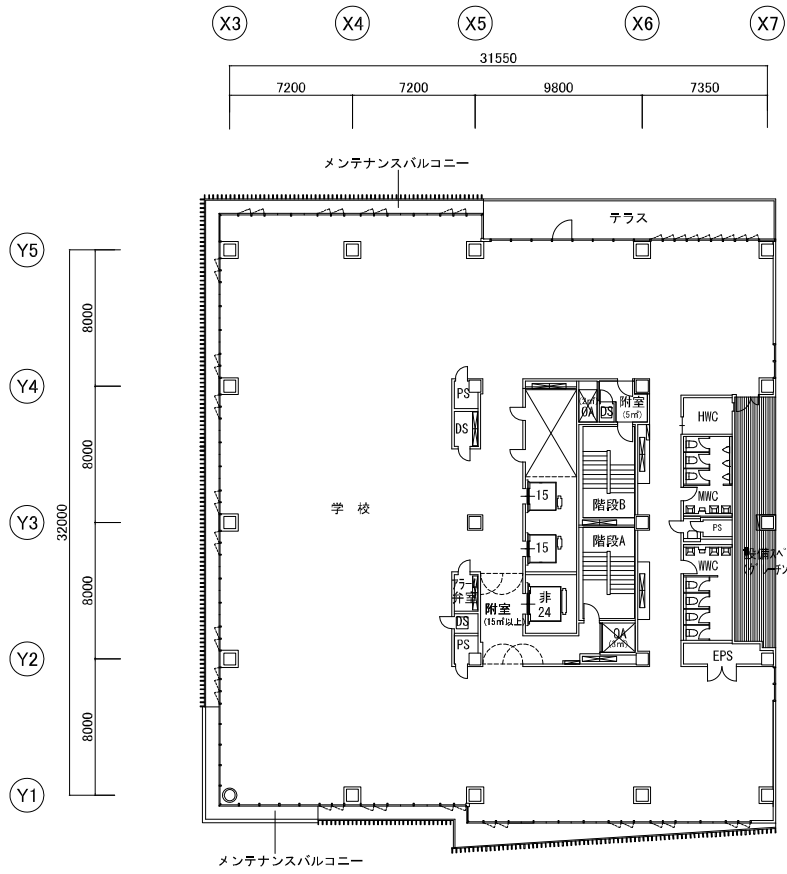
(3) 設計図



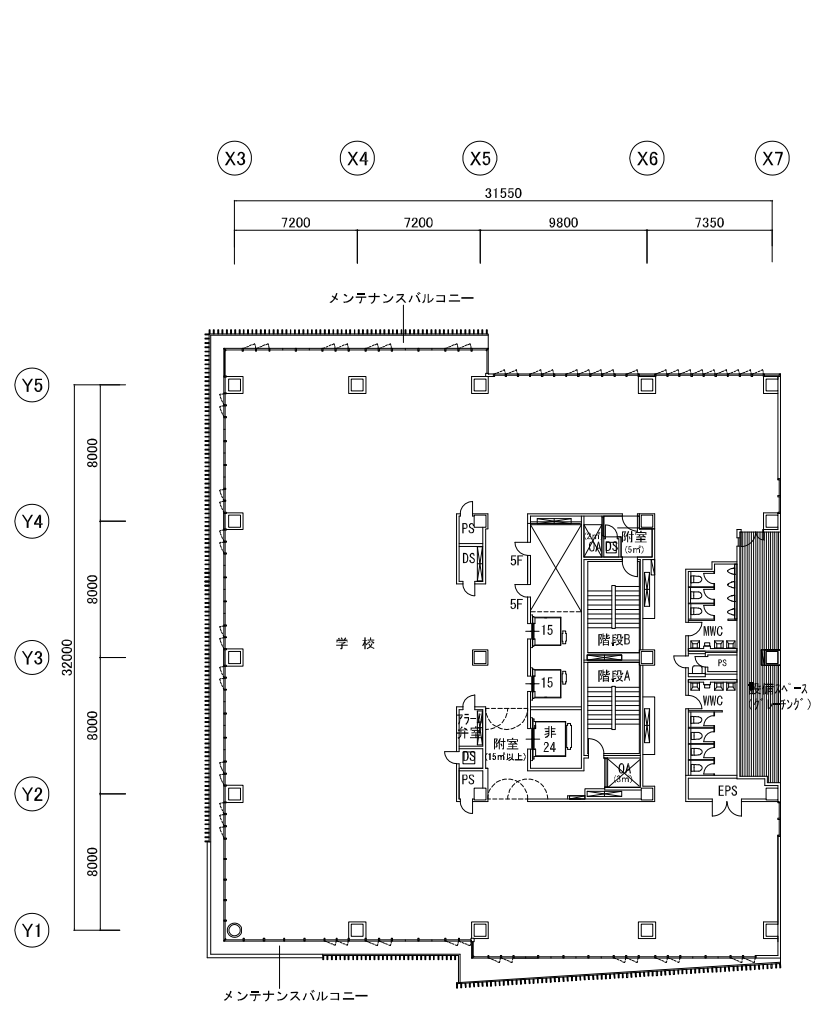




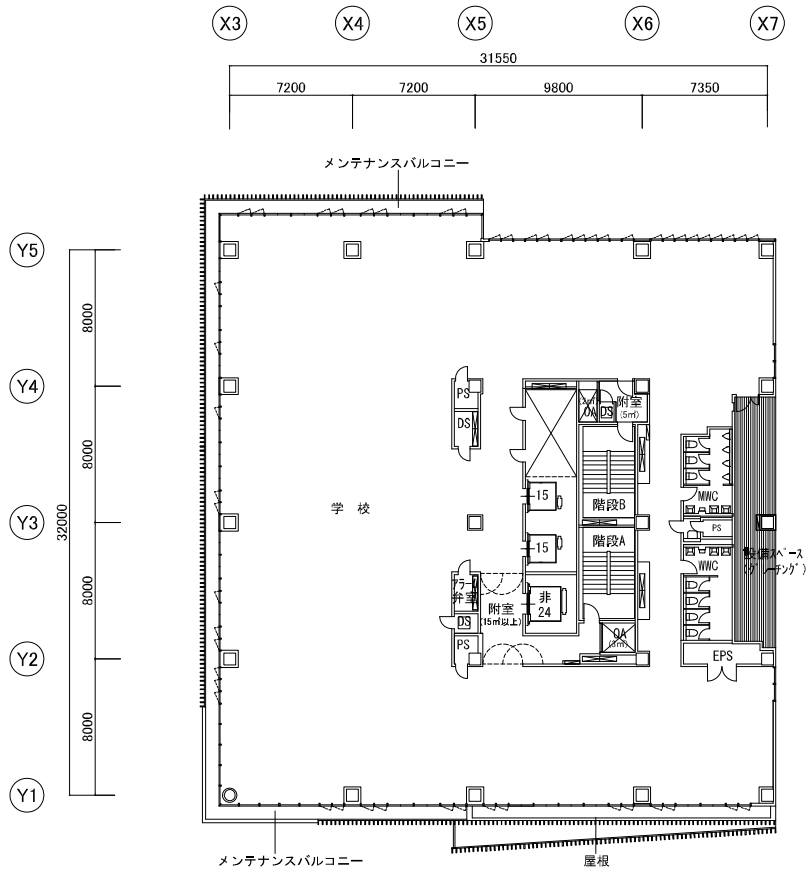




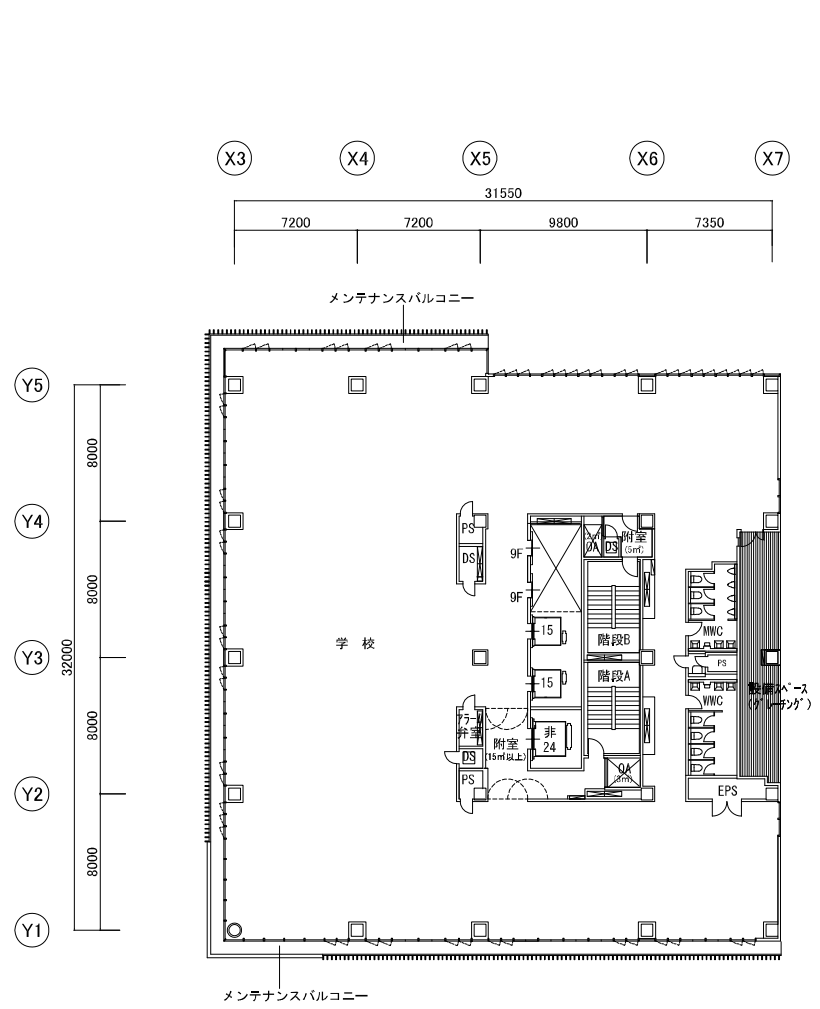
4階平面図



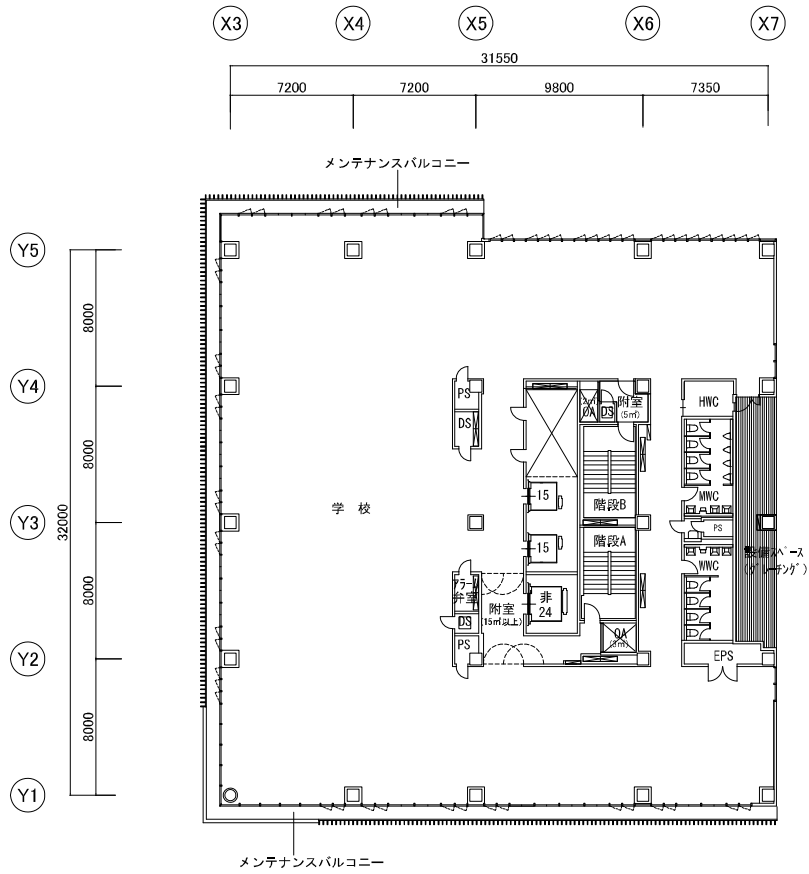
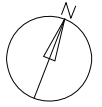
5、6階平面図



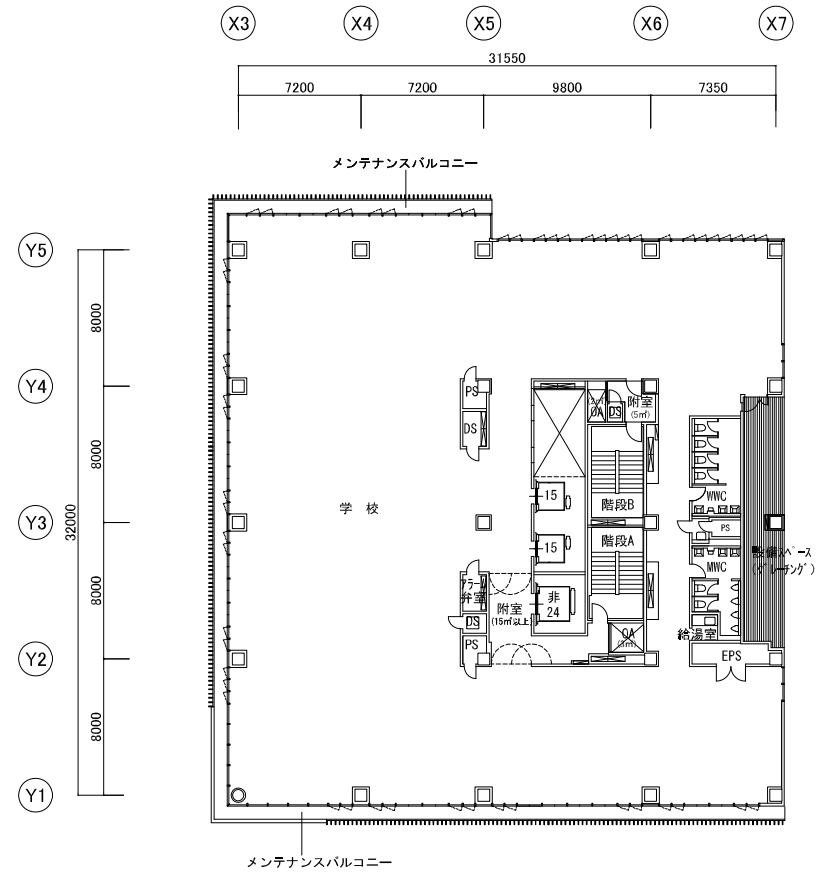
7階平面図



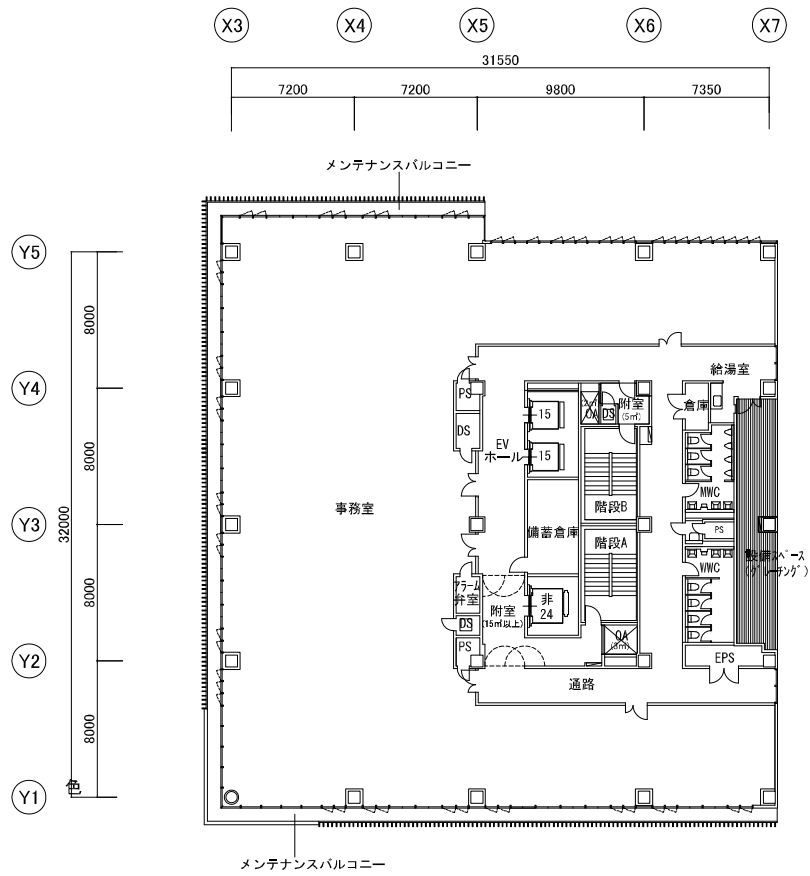
8 ~ 10階平面図



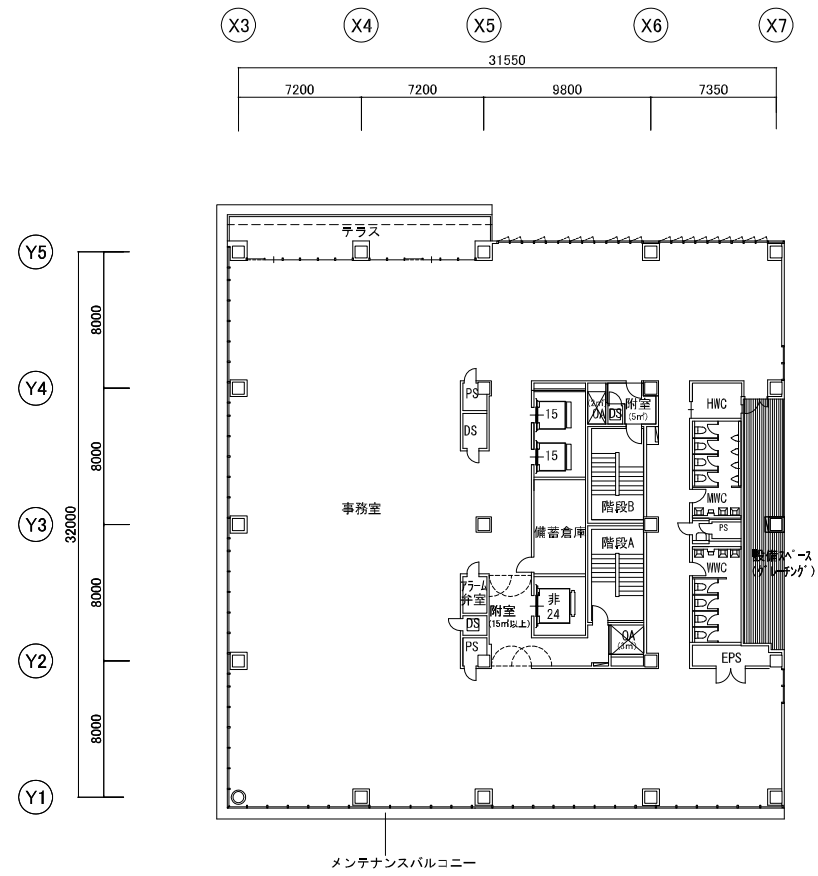
1 1 階平面図



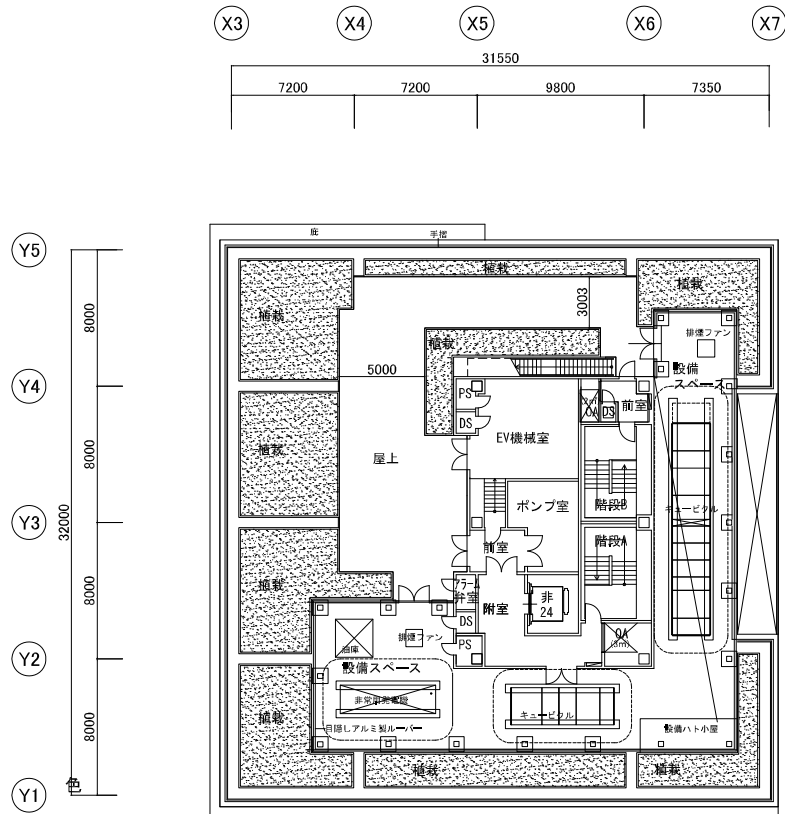
1 2 階平面図



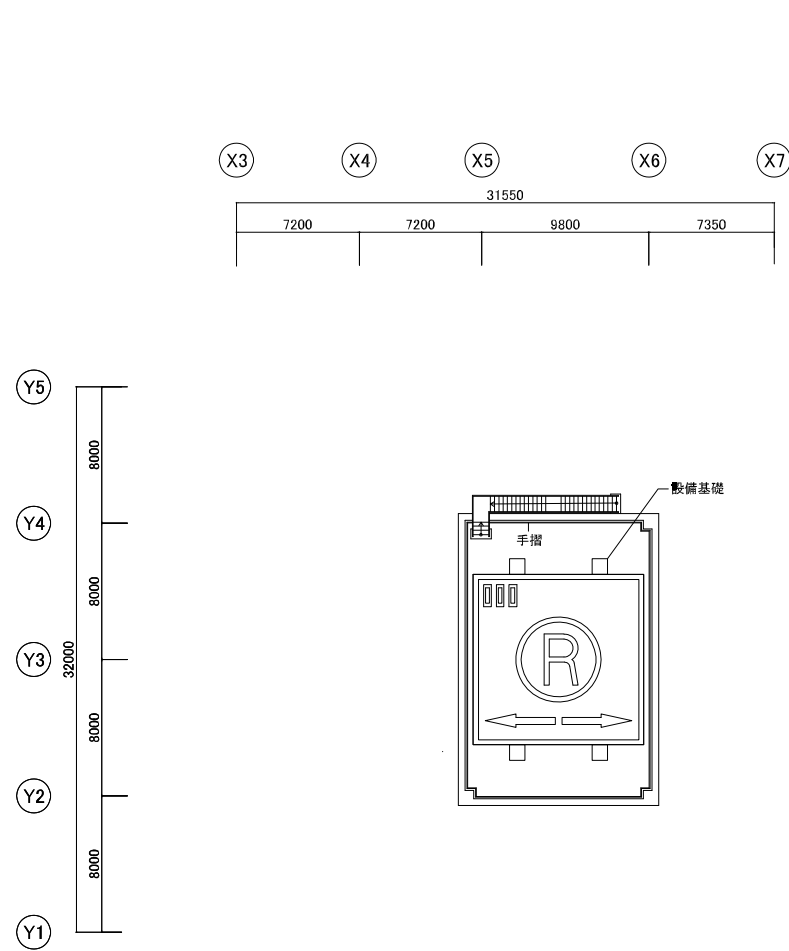
13、14階平面図



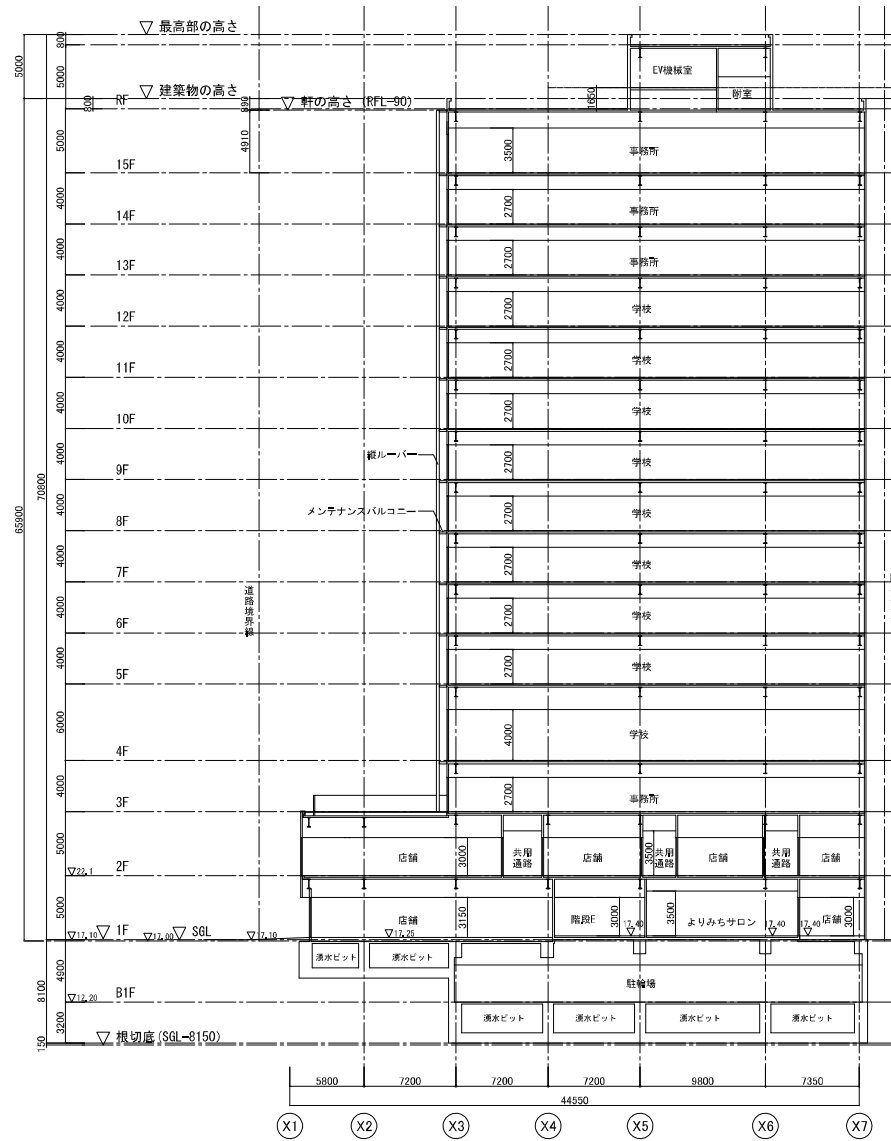
15階平面図

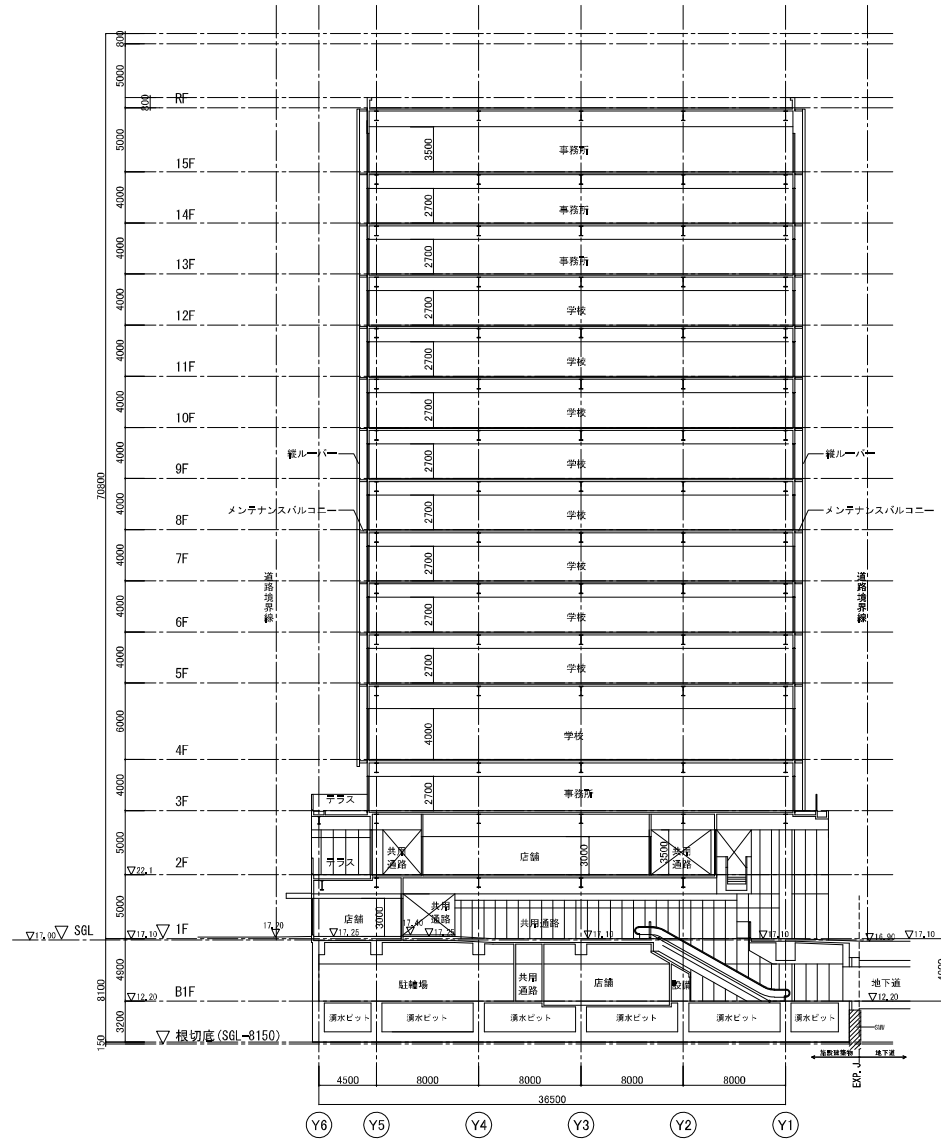


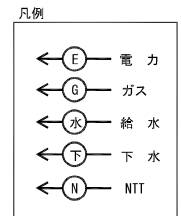
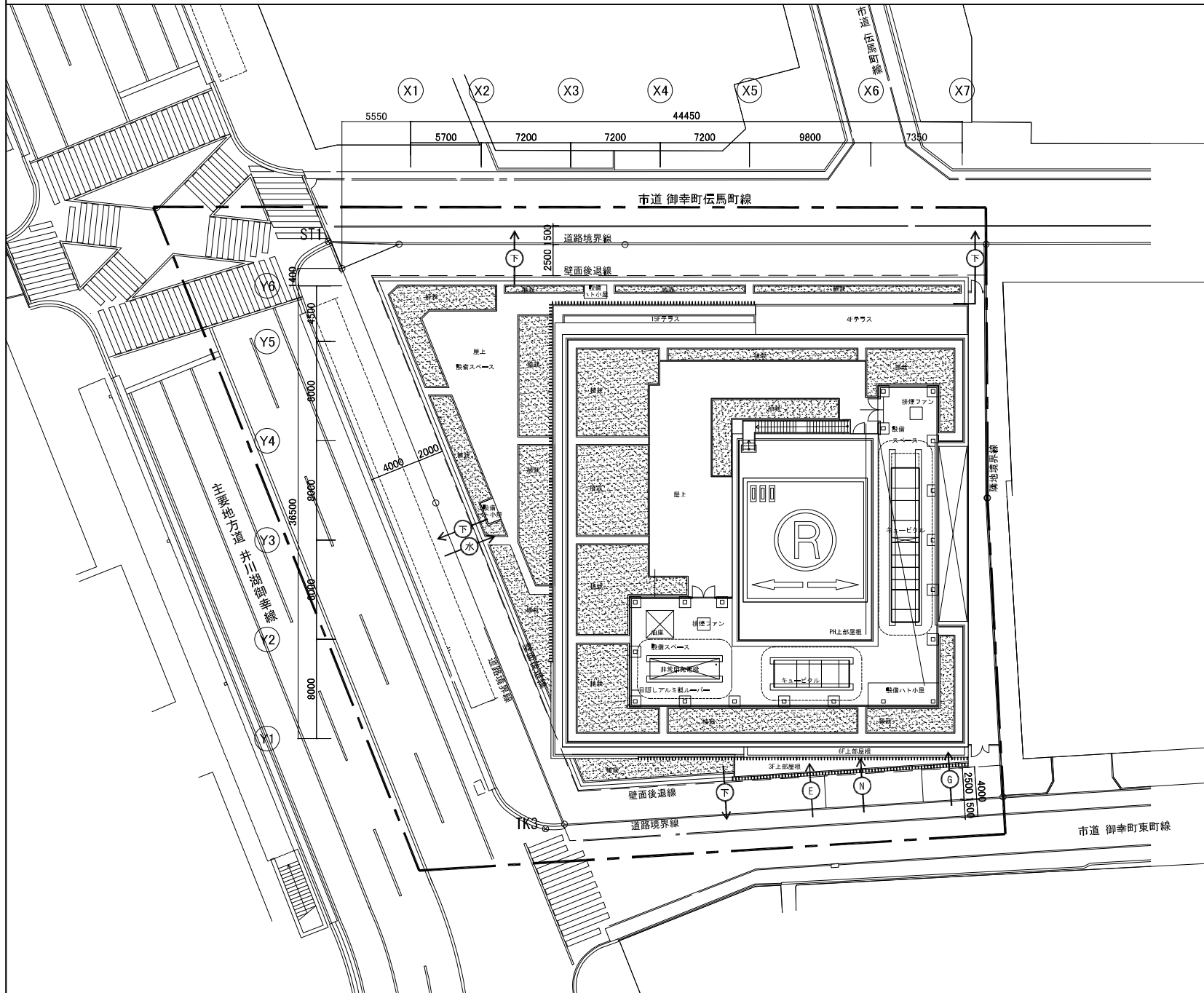
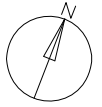
PH階平面図

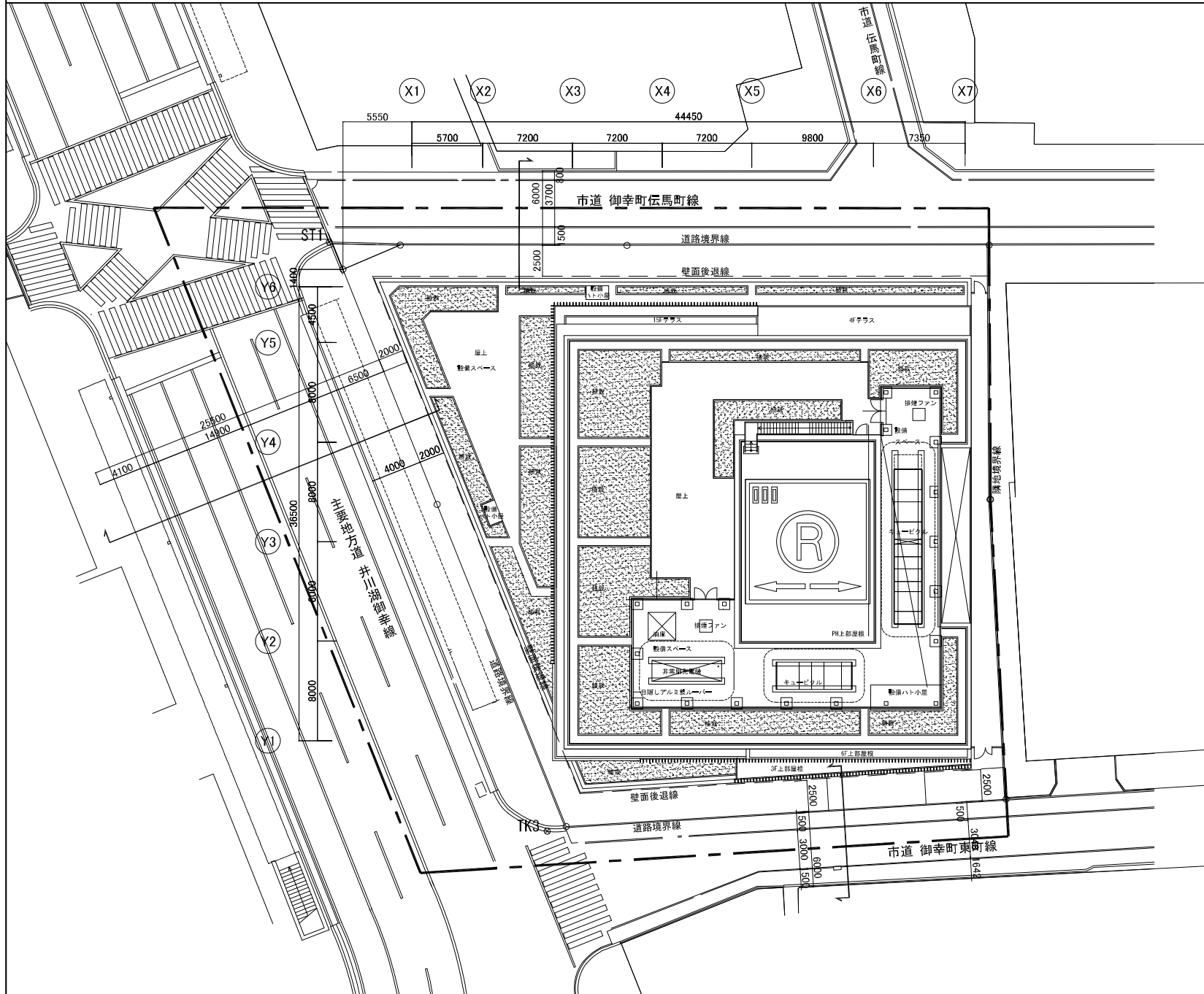
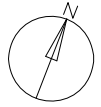


PHR平面図

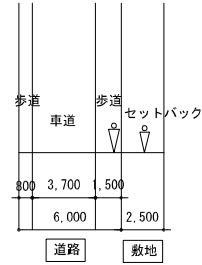




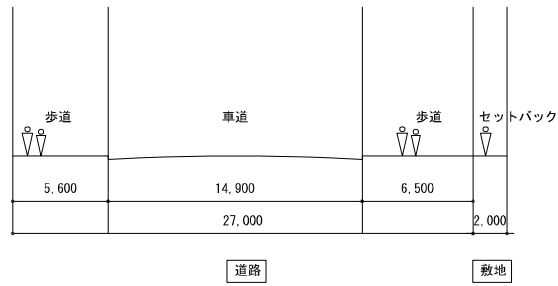




市道-御幸町伝馬町線の幅員構成



県道-井川湖御幸線の幅員構成



市道-御幸町東町線の幅員構成

