

Shizuoka City Hall Shizuoka Office Central Building

Published by Research Division City Council Secretariat
Shizuoka City

5-1 Ote-machi Aoi-ku Shizuoka City
〒420-8602

Tel: 054-221-1481

https://www.city.shizuoka.lg.jp/000_000260.html



The central building of Shizuoka City Hall's Shizuoka office was built in 1934, by architect Nakamura Yoshihei, from Hamamatsu City. It is a 4-story building made of reinforced concrete. The impressive dome of the building is often referred to as the Aoi Tower.

Built based on a Spanish style design, Nakamura Yoshihei also designed a tower about 54m tall with mosaic patterns to serve as the "crown of the city". The top of the tower, designed in blue and green and decorated with terracotta and mosaics, emits light and radiance reflected by sunlight, representing the openness and bright future of Shizuoka City. In order to portray an appearance suitable for Shizuoka City, a pivotal city to the Tokai region, the structure was more splendid than the initially requested design, by the added car porch and tower.

Nakamura Yoshihei left many architectural works both within the nation and abroad. Within Shizuoka City, he was also involved in the design of the head office of Shizuoka Bank (built in 1930) and central building of the Shizuoka Prefectural Office (built in 1937).



Dome

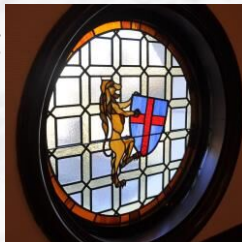


The central building of the Shizuoka office underwent anti-seismic reinforcement and renovation between 1986 ~ 1989. In 1989 it received the Shizuoka Prefectural Cityscape Award, and in 1996, along with the Yasuda Auditorium of the University of Tokyo, it was the first structure in the nation to be designated as a registered tangible cultural property.



Assembly Hall

The luxurious chandelier hanging off the ceiling of the 3rd floor assembly hall, the backdrop behind the chairman's seat, and stained glass all remain the same as when they were installed.



Stained glasses in assembly hall



Assembly hall ceiling



Assembly Hall



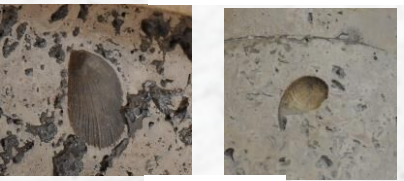
1st floor lobby



Courtyard



Stained glass door



Fossils

Currently, the 1st floor contains the citizen's gallery and office, the city council on the 2nd & 3rd floor, and observer seats and conference rooms on the 4th floor. The stained glass doors along the staircase across the entrance hall lead to the courtyard. The walls, pillars, staircase within the building are all made of Ryukyu limestone in which fossils can be seen.