



静岡人 Shizuoka Jin



This is an English publication of Shizuoka City life and event information. Information is from the City newsletter "SHIZUOKA KIBUN" & other City publications. Nonresidents should check for residency requirements. At least **basic Japanese speaking ability is needed** for participation in most of the events listed here. Multilingual interpretation is available when calling divisions of the City of Shizuoka.



Scan this QR Code to see the color version!

First Sunday every December

Community Disaster Prevention Day: Sun 4 December

Inquiries: Risk Management Center ☎054-221-1241



This Month: World Aids Day

Traffic Safety Initiative

Garbage Collection Information

Human Rights Week

67th Shizuoka Festival

Port of Shimizu Photo Contest 2022

Enjoy the Winter Nights at Sumpu Castle Park!

Take Part in Your Local Drill

Each year, residents' associations hold disaster training drills centered around this day. Please be proactive in participating, while taking precautions to prevent the spread of Covid-19.

Safety Measures in Your Home (Earthquake Edition)

Securing Furniture: This prevents damage from falling furniture

Anti-scatter film for glass: This prevents injuries from flying fragments of glass

Installing quake-sensitive circuit breakers: These cut the electricity supply when they sense abnormal tremors, preventing electrical fires. (*The city provides subsidies for installation. Please inquire for more details)

Confirm Evacuation Points

*In addition to designated evacuation areas and centers, as long as safety can be confirmed, places such as an acquaintance's house or a hotel can also act as evacuation points.



Emergency Evacuation Areas:

Facilities or areas to escape to in an emergency in order to protect yourself from danger (places such as fields or parks in the case of an earthquake).

Evacuation Centers: Facilities where people without a place to stay due to a disaster can live temporarily (places such as schools, gymnasiums, and lifelong learning centers).

Stock Up On Daily Necessities.

During a disaster, it may not be possible to acquire the necessary daily goods. Make sure your house is stocked with the things you and your family need.

- At least 7 days' worth of drinking water (3L per person per day)
- At least 7 days worth of food
- Medicine; medicine handbook
- Portable toilet
- Anti-Covid goods (masks, disinfectant, thermometer, sealable bag, etc.)
- Other (mobile battery, radio, flashlight, batteries, etc.)

*Prepare the things you are likely to take with you when evacuating in a backpack, etc. →



Payment Deadlines

Mon 26 December:

Sewerage Works Beneficiary Dues (*gesuido jigyo juekisha futankin*) Term 3

Nursing Care Insurance (*kaigo hokenryo*) Term 6

Wed 4 January:

Medical Insurance for Elderly People 75 Years Old and Older (*koki koreisha iryo hokenryo*) Term 5

National Health Insurance (*kokumin kenko hokenryo*) Term 7

National Pension Insurance (*kokumin nenkin hokenryo*) November portion

Property Tax/City Planning Tax (*kotei shisanzei/ toshi keikakuzei*) Term 3



Omicron-Targeting Vaccinations Underway

Inquiries: Covid-19 Vaccination Call Center ☎0120-113-394 (8:30-20:30)

Covid-19 Vaccination Reservations:

← Reservation Website (select language from top right corner)

Reservation Hotlines (8:30-20:30) ☎012-116-489; ☎0120-202-489; ☎0120-308-489

Candidates for Omicron-Targeting Vaccine:

Persons 12 years old or older who have completed their initial (1st and 2nd) vaccinations and for whom 3 months has passed since their last vaccination.

*Please do not lose your vaccination tickets as they are necessary to receive vaccinations. If you have lost your vaccination ticket, consult the Reservation Website or call the Vaccination Ticket Reissuance Hotline (☎0120-373-185)

*Covid-19 Vaccinations will continue until the end of March 2023.

*Scan the QR Code on the back of the Shizuoka Jin for the city's Multilingual Covid-19 Information page.



Venues

Group	Venues
Group vaccinations	COUPOLE Hall; APiTA Shizuoka Branch; City Hall Shimizu Office; Joto Health & Welfare Area
Individual vaccinations	Various medical facilities *Confirm via the Reservation Website, Hotlines or the city website

Initial and Child Vaccinations Still Underway

Initial vaccinations, child vaccinations (5-11yrs old), and infant vaccinations (6 months - 4yrs old) are still underway. All of these vaccinations are subject to the supply of vaccines, so we recommend getting vaccinated as soon as possible. Initial vaccinations, especially, will end as soon as the stocks of the (conventional) vaccine run out.



1 December is World Aids Day

Inquiries: Health Care Promotion Division ☎054-249-3172

HIV-positive people and HIV-negative people live together in our society. In the age of Covid-19, when problems like isolation and loneliness are more personal than ever, we want to spread accurate information and get more people thinking about HIV and AIDS. We hope this will lead to increased HIV testing and less prejudice and discrimination.



HIV: Human Immunodeficiency Virus. The virus that gives rise to AIDS.

AIDS: The collective term for the various illnesses brought about by HIV infection.

Free HIV Testing

When: In principle, the first Wednesday each month, 9:30-11:30 (Results will be given on a designated day, in principle, one week after taking the test)

Where: Public Health Center (Joto-cho, Aoi-ku)

Components of test: HIV antibody and other requested STD tests (syphilis, hepatitis B, hepatitis C, and , for women only, chlamydia antibody).

Applications: Can be made anonymously via the city call center ☎054-200-4894

(For same-day appointments, consult the Health Care Promotion Division)



City website (Japanese) →

Anyone can become infected with viruses like HIV. If you are worried you may be infected, please make use of the HIV tests at the Public Health Center.

Did You Know? The Latest AIDS Knowledge:

Through the advancement of medical treatment, the prognosis of people with HIV has improved. With early detection, and continued treatment from an early stage, the onset of AIDS can be prevented. In this way, HIV positive people can expect to live their lives just as HIV negative people do.

1. Even if you are infected with HIV, AIDS can be avoided by taking medicine.
2. The most common treatment is one pill, once a day.
3. By lowering the levels of HIV in your body through with medicine, HIV becomes non-transmissible via sexual intercourse.
4. The life expectancy of HIV positive people is no different to HIV negative people.

End-of-Year Traffic Safety Prefectural Initiative (Thur 15-Sat 31 December)

Inquiries: Citizen Safety & Security Division

☎054-221-1058

Beware of Traffic Accidents in the Evening and at Night

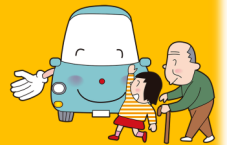
Potentially severe traffic accidents often happen in the evening and at night.

Pedestrians: Please make use of reflective materials to inform drivers of your presence as early as possible

Drivers: Please turn on your lights early (Until about February the recommended time is from 16:00) and use your high beams as needed if there are no cars coming in the opposite direction.

Important Points

1. Preventing traffic accidents involving the elderly
2. Preventing traffic accidents in the evening and at night
3. Eradicating dangerous driving such as drunk driving.



Drunk Driving is a Serious Crime

Due to factors such as severe punishment, drunk driving accidents have been decreasing. However, they still occur, especially with the increase in drinking over the holidays. Make sure that if you drink you don't drive and if you need to drive you don't drink. *Riding with a drunk driver, offering your car to a drunk driver, and asking a drunk person to drive are also punishable offences.



Year-End/New Year Garbage Collection Information

Burnable Garbage Collection Days

Collection Days	Last day of the year	First day of the year
Mon & Thur	Thur 29 Dec	Thur 5 Jan
Tue & Fri	Fri 30 Dec	Fri 6 Jan
Wed & Sat	Wed 28 Dec	Wed 4 Jan

*Please check the City website for details. For more information on neighborhood recycling collection dates, refer to notices from your local residents' association.

Inquiries: Garbage Collection Division ☎054-221-1365;
Numagami Garbage Disposal Center ☎054-264-1900;
Shimizu Garbage Disposal Center ☎054-366-2751;
City Call Center ☎054-200-4894

Human Waste Removal

Inquiries: Refuse Policy Division ☎054-221-1264

Consult the removal business in your area regarding operations during the year-end/new year period.

Download the Gomi Navi Garbage Separation App (English Available)



Recyclables, Large, and Non-Burnable Garbage Collection Days

The schedule for December is unchanged. For areas with collection on Mon or Tue, the schedule is pushed back one week for January. Recyclables collection in Shimizu Ward is as per the Shimizu Ward collection calendar.

Application Dates for Large and Non-Burnable Garbage Collection

■Phone ☎0120-532-471

Year-end: Until 7pm, Wed 28 Dec

New Year: From 9am, Wed 4 Jan

■Online→

Year-end: Until Fri 23 Dec

New Year: From 10am,

Thur 5 Jan



Garbage from Year-End Cleaning

In principle, put out your burnable garbage and recycling on the collection days for your area and apply for collection of your large and non-burnable garbage. If you absolutely have to bring garbage to disposal facilities, please separate it first. **Between Mon 19 and Fri 30 Dec, garbage may be brought directly to facilities from 8:30-12:00 and 13:00-16:00.** (Only available in the morning on Sat 24 and Fri 30 Dec.) *The last day for business waste is Wed 28 Dec/ *Burnable garbage and business garbage not accepted at Shimizu Garbage Reception Center/ * Disposal facilities do not accept recyclables/ *All facilities closed on Sun 25 Dec

Inquiries: Nishigaya Disposal Facility ☎054-296-0054;

Numagami Incineration Plant ☎054-262-4015;

Shimizu Garbage Reception Center ☎054-366-2751





Human Rights Week (Sun 4 to Sat 10 December)

Division in Charge: Gender Equality & Human Rights Policy Division

Human Rights Day in Japan is on December 10th (the date adopted by the UN in the Universal Declaration of Human Rights), and the week leading up to it is Human Rights Week. Problems regarding human rights happen all around us. Why not take this opportunity to think about your human rights and those of your friends, family, and everyone around you.

Human Rights Week Special Consultation Counter (Free)

Time: Mon 5 and Tues 6 Dec, 10:00 – 16:00 *Come directly on the day

Place: 1F, New Building, City Hall Shizuoka Office

Details: Consultations with human rights volunteers.

Inquiries: Shizuoka Human Rights Volunteer Association ☎054-254-3555 (Shizuoka District Legal Affairs Bureau Voice Guide 5)

Human Rights Consultation Numbers

Confidential. Don't hesitate to get in touch! Weekdays 8:30 -17:15

Human Rights Hotline ☎0570-003-110

Women's Rights Hotline ☎0570-070-810

Children's Rights Hotline ☎0120-007-110

Foreign-language Human Rights Hotline ☎0570-090-911

Rainbow Coming-of-Age Ceremony

Gender and sexual orientation come in shades as varied as a rainbow. This is an event where LGBTQ and questioning people can be themselves and take the first step towards becoming who they want to be.

*See city website for more information →

Time: Sun 8 Jan, 15:30 – 16:30

Place: Aicel 21 (Higashi Kusabuka-cho, Aoi-ku)

Who: 30 LGBTQ and questioning people who come of age in FY2022 or have already come of age. (*Free; No dress code; Allies also welcome)

Details: Message from the mayor, coming-of age address, relay talk, etc.



Human Rights Development Online Lecture (Free)

Time: Fri 13 Jan-Mon 13 Feb *Can be viewed on Zoom anytime during this period

Details: Thinking About LGBTQ from the Point of Diversity: Diversity in Gender and Lifestyle

Lecturer: Horikawa Ayumu (Managing Director, Akaruku Inc.)

Applications: City website (Thur 1 to Wed 28 Dec) →



Participate in the 67th Shizuoka Festival

Inquiries: Shizuoka Festival Executive Committee Secretariat (Ote-machi Building 4F, Ote-machi, Aoi-ku) ☎054-221-0182



Come and be a part of the living tradition of Shizuoka!

This beloved festival will take place from Fri 31 March to Sun 2 April 2023 around Sumpu Castle. It reenacts Lord Tokugawa Ieyasu taking his court to Sumpu to see the cherry blossoms. We are looking for people to take part in all aspects of the festival.

Here are some of the things you can do:

- Dress up in traditional clothing and walk in a parade
- Join in the Night Cherry Blossom Dance
- Perform on stage
- Volunteer as staff for the event
- Set up your own food cart



Some of the above require participation fees, and the deadlines for application differ. For more details, including application forms, information regarding age-limits, clothing rental, etc. contact the Shizuoka Festival Executive Committee Secretariat, the "Streets are a Theatre" Promotion Division, or scan the above QR Code for the Shizuoka Festival Official Website.

Port of Shimizu Photo Contest 2022

Inquiries: Port of Shimizu Color Harmonization Plan Promotion Council Secretariat ("City of Maritime Culture" Policy Division) ☎054-354-2432



Entry Period: Thur 1 Dec 2022 to Tue 31 Jan 2023

Theme: Pictures of your favorite views at the port, pictures of nostalgic views at the port, or pictures of views at the port that you want to introduce to everyone.

How to Enter: Via Instagram: ①Follow

shimizu_color_harmonization; ②Upload your photo with the hashtag "#清水港みなと色彩計画フォトコンテスト2022"

Or Via the website →



Prizes: There will be a grand prize, a runner up, and multiple special awards. Winners will receive luxurious prizes.

See the website for more information, including points of caution when entering.

Exhibit of Submitted Photos

When: Sat 4 and Sun 5 March, 9:00 to 18:00

Where: Underground Area in front of JR Shizuoka Sta. North Exit

*Come directly on the day of the event; Free



Higashi Gomon & Tatsumi Yagura Light-Up Renewal

Come and see the brand

new light-up design by world renowned lighting designer, Ishii Motoko. The opening ceremony and the period from Fri 23 to Sun 25 Dec will feature a multicolored, moving light performance! Lights will be on everyday from sunset to late night (may change based on the season).

Enjoy the Winter Nights at Sumpu Castle Park!

Inquiries: Tourism & MICE Promotion Division ☎054-221-1438

Opening Ceremony: Tue 20 Dec, 17:00

at the area in front of the Shizuoka City Museum of History. *A special viewing lounge will be opened for free in the Shizuoka City Museum of History. See the Shizuoka Night View website for more information. →



Christmas Sky Lanterns in Shizuoka

When: Sat 10 Dec, 18:00 (or the next Sat in case of rain)

Where: In front of Momijiyama Garden

Applications →

Application required; Viewing is free, but participation requires a fee.

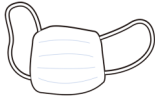


City Offices Directory

If you don't know the number of a particular office, call the Information Desk (*daihyō bangō*)

- | | | | |
|--|--------------|--|--------------|
| ● Aoi Ward Office
5-1 Ote-machi, Aoi-ku | 054-254-2115 | ● City Hall Shizuoka Office
5-1 Ote-machi, Aoi-ku | 054-254-2111 |
| ● Shimizu Ward Office
6-8 Asahi-cho, Shimizu-ku | 054-354-2111 | ● City Hall Shimizu Office
6-8 Asahi-cho, Shimizu-ku | 054-354-2111 |
| ● Suruga Ward Office
10-40 Minami Yahata-cho,
Suruga-ku | 054-202-5811 | ● Shimizu Ward Office
Kambara Branch
1-21-1 Kambara-shinden,
Shimizu-ku | 054-385-3111 |

Useful Services and Information



COVID-19
Information



English
Information Page



Shizuoka City
Association for
Multicultural
Exchange



Multilingual
Consultation Service
Shizuoka City

Online Guide to Administrative Procedures (English)

Aoi Ward



Aoi Ward's
Character:
Aoi-kun

葵区PR
キャラクター
あおいくん

Suruga Ward



Suruga Ward's
Character: Torobe

駿河区 応援隊長
トロベ

Shimizu Ward



Shimizu Ward's
Character: Shizulla

清水区広報キャラクター
シズラ ©清水区

Offices & Associations Dealing Specifically with Foreign Nationals' Needs & Issues

Shizuoka City Association for Multicultural Exchange (SAME)	Shizuoka Office	Shimizu Office
	City Hall - Shizuoka Office ,17F 054-273-5931	City Hall - Shimizu Office, 2F 054-354-2009
Nagoya Regional Immigration Services Bureau-Shizuoka Branch Office	Fukuichi Temma-cho Bldg., 6F; 9-4 Temma-cho, Aoi-ku 054-653-5571	

"Shizuoka Jin—Shizuoka City News and Events" is a free publication translated & edited by the City of Shizuoka International & Multicultural Affairs Division in cooperation with the Public Relations Division (*Kōhō Ka*). We appreciate your comments, inquiries and submissions.

City of Shizuoka International & Multicultural Affairs Division
(*Shizuoka Shi Kokusai Koryu Ka*)

Tel. 054-221-1303 5-1 Ote-machi, Aoi-ku; Shizuoka City 〒420-8602
Send email inquiries regarding Shizuoka Jin to: cir@city.shizuoka.lg.jp

Shizuoka Jin Web Page: www.city.shizuoka.jp/000_002148.html